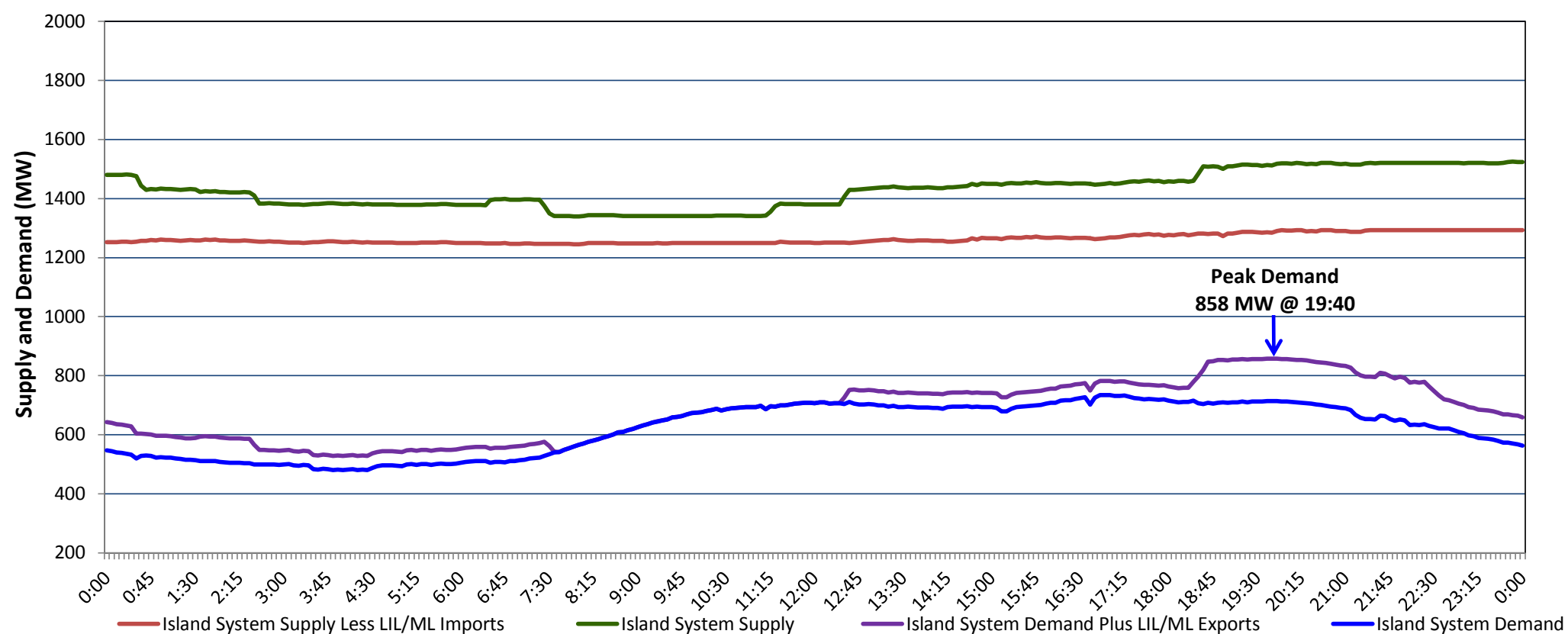


## Newfoundland Labrador Hydro (NLH) Supply and Demand Status Report Filed Monday, September 20, 2021

### Section 1 Island Interconnected System Supply, Demand & Exports Actual 24 Hour System Performance For Sunday, September 19, 2021



#### Supply Notes For September 19, 2021

1,2

- A As of 0804 hours, May 26, 2021, Holyrood Unit 1 unavailable due to planned outage (170 MW).
- B As of 0850 hours, July 25, 2021, Bay d'Espoir Unit 5 unavailable due to planned outage (76.5 MW).
- C As of 1051 hours, July 25, 2021, Bay d'Espoir Unit 6 unavailable due to planned outage (76.5 MW).
- D As of 1052 hours, August 01, 2021, Upper Salmon Unit unavailable due to planned outage (84 MW).
- E As of 1500 hours, August 12, 2021, Holyrood Unit 2 unavailable due to planned outage (170 MW).
- F As of 1006 hours, September 11, 2021, Holyrood Unit 3 unavailable (150 MW).

### Section 2 Island Interconnected Supply and Demand

Mon, Sep 20, 2021	Island System Outlook <sup>3</sup>			Seven-Day Forecast	Temperature (°C)		Island System Daily Peak Demand (MW)	
					Morning	Evening	Forecast	Adjusted <sup>7</sup>
Available Island System Supply: <sup>5</sup>	1,320		MW	Monday, September 20, 2021	10	7	890	890
NLH Island Generation: <sup>4,8</sup>	965		MW	Tuesday, September 21, 2021	9	13	755	755
NLH Island Power Purchases: <sup>6</sup>	125		MW	Wednesday, September 22, 2021	16	18	740	740
Other Island Generation:	230		MW	Thursday, September 23, 2021	16	16	730	730
ML/LIL Imports:	-		MW	Friday, September 24, 2021	10	10	750	750
Current St. John's Temperature & Windchill:	9 °C	N/A	°C	Saturday, September 25, 2021	11	11	700	700
7-Day Island Peak Demand Forecast:	890		MW	Sunday, September 26, 2021	11	13	715	715

#### Supply Notes For September 20, 2021

3

- Notes:
1. Generation outages for running and corrective maintenance are included. These are not unusual for power system operations. They generally do not impact customer supply. The power system operators schedule outages to system equipment whenever possible to coincide with periods when customer demands are low and sufficient supply reserves are available. However, from time to time equipment outages are necessary and reserves may be impacted.
  2. Due to the Island system having no synchronous connections to the larger North American grid, when there is a sudden loss of large generating units there may be a requirement for some customer's load to be interrupted for short periods to bring generation output equal to customer demand. This automatic action of power system protection, referred to as under frequency load shedding (UFLS), is necessary to ensure the integrity and reliability of system equipment. Under frequency events have typically occurred 5 to 8 times per year on the Island Interconnected System and the resultant customer load interruptions are generally less than 30 minutes. With the activation of the Maritime Link frequency controller during the winter of 2018, UFLS events have occurred less frequently.
  3. As of 0800 Hours.
  4. Gross output including station service at Holyrood (24.5 MW) and improved NLH hydraulic output due to water levels (35 MW).
  5. Gross output from all Island sources (including Note 4).
  6. NLH Island Power Purchases include: CBPP Co-Gen, Nalcor Exploits, Rattle Brook, Star Lake, Wind Generation and capacity assistance (when applicable).
  7. Adjusted for curtailable load, market activities and the impact of voltage reduction when applicable.
  8. Due to limitations inherent in the design of combustion turbines, the output of combustion turbines may be reduced in the event that ambient temperatures exceed the threshold required for full rated output. This threshold is dependent on the design of each turbine.

### Section 3 Island Peak Demand Information Previous Day Actual Peak and Current Day Forecast Peak

Sun, Sep 19, 2021	Actual Island Peak Demand <sup>8</sup>	19:40	858 MW
Mon, Sep 20, 2021	Forecast Island Peak Demand		890 MW

- Notes: 8. Island Demand / LIL / ML Exports (where applicable) is supplied by NLH generation and purchases, plus generation owned and operated by Newfoundland Power and Corner Brook Pulp & Paper (Deer Lake Power, DLP).